

Bougainville Copper Concentrates

VOLUME THREE / NUMBER FIFTEEN AUGUST, 1973

The scene is a quiet Sunday morning in Kieta Harbour. Yachts from the local sailing club are setting out on a tranquil ocean. Story centre pages.



Arawa grows up

August/September are going to be months of metamorphosis for Arawa Township and its 3,500 population. The company/government town has emerged from its chrysalis of dirt roads and temporary facilities, and in the next two months will become a fully fledged town community with shopping centre, supermarket, sports facilities and club. In the not too distant future we can look forward to a hotel and a tavern.

In Panguna the pace is slower but the butterfly will be a worthwhile one too. As this "Concentrates" comes out the swimming pool/gymnasium complex should finally be ready. Extensions to the tavern are all but finished. And work on the new church and Karoona Haus recreation centre are well into their last stages. The future also holds a new town centre for Panguna.

Let's take a look at Arawa.

Shopping centre: Arawa is unique in Papua New Guinea in that indigenous groups of businessmen dominate ownership of the shopping complex. Land is owned by the government and, mainly through PNG Development Bank loans, groups of local businessmen have bought plots, had shops built and are now in a position to rent them to prospective clients.

At the moment definite rentals have been taken up by the following:

- . Delicatessen and small goods shop.
- . Gents hairdresser.
- . Household electrical appliances and air conditioning units.
- . Modern chemist.
- . Newsagent.
- . Optometrist.
- . Eastern Emporium.
- . Household furnishings.
- . Ladies fashion shop.
- . Dress materials shop.
- . Gents clothing.
- . Sporting goods.
- . Squash court.

Well known hairdresser Ron Uru is the only single person involved in a business venture, the rest are groups of businessmen. Mr. Uru's premises include provision for the leasing of a downstairs shop.

The squash court will be managed by Francis Aniona for a group of North Nasioi businessmen. Mr. Aniona was formerly BCP marketing supervisor at Kobuan. It will open late this month, and has three courts, mens and womens changing rooms, gallery and a kiosk for selling soft drinks and hiring equipment. Nearby is a sports store. Part of the complex will also be rented to the Arawa branch of the PNG Development Bank which has such an interest in the area, including the lending of up to 90 per cent of the cash required by groups building in the shopping centre.

Close to the squash court is a fish, chip and take-away-food shop due to open soon. It will also have seating accommodation for diners.

There are some shops still available for lease. Further information about them can be obtained from the PNG Development Bank office in Arawa (tel. 951575).

Department store: The old Arawa Supermarket closes its doors in late August. It will be taken over by the Arawa Municipal Commission which also owns the Fermentary and the old Bechtel construction offices.

At the same time the new department store, built by Barclay Bros., opens its doors to the general public. Claiming to provide customers with the most comprehensive range of foods ever shown anywhere in Papua New Guinea, the store's food market also features a take-away area and a cafeteria for 80 seated people.

Other departments in the single level building include mens', childrens' and womens' fashions, homewares, general accessories and electricals. This last will have a record shop with over 4,000 items on sale.

The store has been financed by Bougainville Copper who will lease it to Arawa Enterprises Limited, subsidiary of the Panguna Development Foundation (PDF). Arawa Enterprises will eventually purchase the store from BCP.



Here is a brief explanation of PDF and AEL and their relationship with Bougainville Copper.

PDF's main objectives are to encourage financial and management participation in commercial enterprises by Papua New Guineans, and to support, assist and promote charitable, scientific and educational projects useful to the general community of the country.

PDF is essentially a foundation. Members are prohibited from receiving profits and dividends. All profits from various subsidiaries of the foundation must be used for the furthering of its aims.

PDF also hold 2 million shares in Bougainville Mining which it is entrusted to distribute to the local people over the next 10 years.

PDF is directed by an Executive Committee comprising senior executives of BCP. PDF also has an advisory committee (all Papua New Guineans) whose function is to advise the executive committee on PDF activities.

PDF Holdings Pty. Limited is holding company for the foundation. It acts as a consolidation point for the income from the trading companies.

Which brings us to Arawa Enterprises Limited. This company, with Barapinang Enterprises Limited, PDF Wholesalers Limited and Arawa Hotels Pty. Limited, is an operating company of PDF. Just like its parent it has no commercial connection with Bougainville Copper. It operates the department store that it leases from BCP and will be in the process of buying it from the mining company.

Arawa Enterprises was formed under the terms of an agreement between the Arawa villagers, the then administration of PNG and Bougainville Copper. The articles of association provide for at least 49 per cent of the shares to be owned by Bougainvilleans.

Later this year a prospectus will be issued offering these shares to Bougainvilleans. This share issue will be at par value and as AEL has not paid out any dividends the new shareholders will not only participate in the profitability of the new Department store but also benefit from the previous operations of AEL in the temporary store.

The Bougainvillean shareholders will also be represented on the Board of Directors of AEL.

Further share issues will be made to Bougainvilleans from time to time and finally this major store in Arawa will be fully owned and controlled by Bougainvilleans.

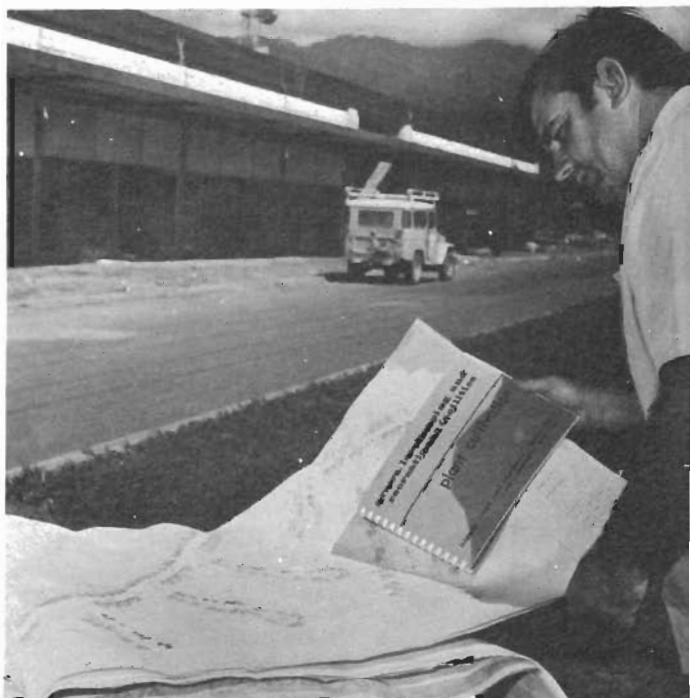
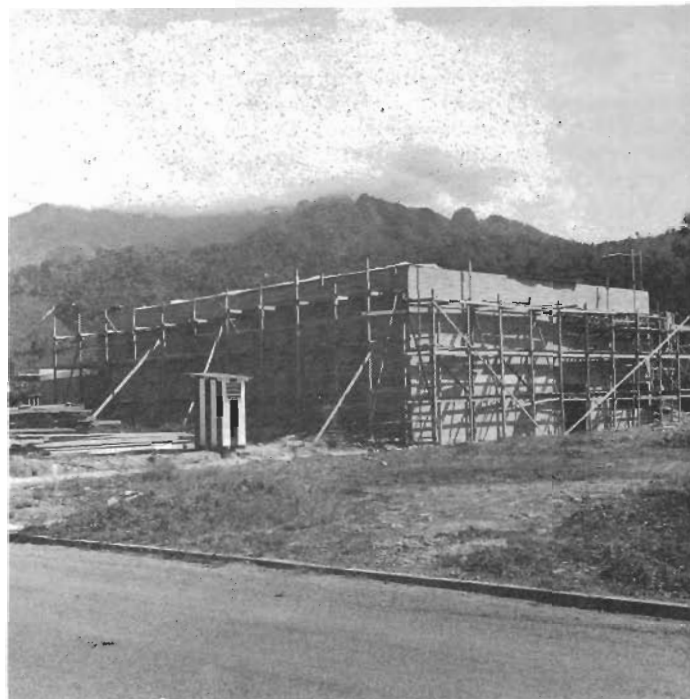
Tavern: The agreement with the Arawa landowners also provided for construction of a tavern for Bougainvillean ownership. The Arawa Town Site Development Committee have allocated a site near the Marimari Road and when built the tavern will be operated by Arawa Enterprises.

The tavern will provide bar and beer garden facilities and provision will be made for a snack bar.

Hotel: Operating company for the new hotel will be Arawa Hotels Pty. Limited. Since the granting of the hotel licence, conceptual drawings of the proposed hotel have been submitted to the Licensing Commission and approved in principle.

A recognised hotel operator is expected to participate in its construction and operation.

Left, artist's impression of proposed Arawa Hotel. Top, Arawa Squash Courts. Centre, David Bretherton, district officer (projects), studies town plans; Francis Aniona, squash courts manager. Right, Harry Roach, executive officer of the AMC, studies plans. In background is the new Arawa shopping centre.



(Continued next page)

(Continued from previous page)

Plans allow for accommodation units to be grouped around a small, open pool. A larger enclosure containing a swimming pool has as its perimeters a guest lounge and accommodation units, dining room, cocktail bar and circulation paths. The dining room is closely related to the accommodation units.

There will also be a public and saloon bar and a beer garden and functions room.

Arawa Country Club: The temporary club house building is complete and three occasional licences have been granted each week for drinking. Pictures are shown on Tuesdays and most Saturdays and the golf course is now open - six holes at the moment and three more coming.

It is hoped that construction of a swimming pool will start in the new future. Tennis courts are ready and need only lights and fencing for play to start.

There are 267 members at the moment. Membership is \$30 a year for those earning over \$4,000 a year; \$22.50 for those earning over \$2,000 and \$15 for those earning \$2,000 or under.

Light Industrial Area: This government owned land at Arawa is being leased to light industrial undertakings. So far over 20 blocks of land have been allocated to businesses and government departments.

Major business is PDF Wholesalers Pty. Limited which will soon move its warehousing from Loloho to Arawa. PDF Wholesalers was originally established to combine the buying for AEL and BEL. In addition today it acts as purchasing agent for BCP messes and is expanding its activities into the supply of wholesale goods to retail agents all over Bougainville.

Other light industries recently set up in the area include:

- . Arawa Motors Pty. Limited, agents for Datsun and Ford, with a major workshop and spare parts complex.
- . Bougainville Beverages Pty. Limited, a soft drink

factory, still being constructed. It will sell established names and also market a new soft drink only available on Bougainville.

- . Both Watkins (Overseas) Limited and Barclay Bros. (NG) Limited have land in the area.
- . Bougainville Bakeries recently established production in this area.
- . The proposed milk factory in which PDF Holdings is to take an interest will be sited here. This factory will reconstitute milk and also manufacture ice cream. Tanubada Holdings Pty. Limited will also take an interest.
- . Four blocks have been taken by the PNG Business and Industry Centre for helping local businessmen commence operations. Units within the centre are rented by Navitu Enterprises which has a workshop there; Pekahoit Enterprises which has a motor vehicle repair shop; Pikonava Group office and base; the building group of Arawa Contractors; and (before its shop in Arawa opens) the Tick Tock Watchmaker.

Arawa House: Built by Morobe Construction Limited and owned by the Arawa Municipal Commission, this \$381,000 three storey complex should be completed in March next year. Construction has already begun.

The ground floor will contain a branch of the Commonwealth Bank and shops; the first floor will be taken up by the Arawa Commission, although a meeting hall will be available for rental; the third floor will be available entirely for rental.

Plans also allow for a second stage extension to the building containing a three storey community centre. Funding for this however will take place after the first stage has been completed.

In the next issue of "Concentrates" I will look at the development situation at Panguna and the companies behind it.

- JOHN ECCLES

To the right is a breakdown of all foodstuffs and household goods purchased by BCP and PDF during the year 1972-1973. These goods would have been sold through the two trade stores, purchased by the camp messes or sold, through PDF's wholesale outlet, to retailers on Bougainville.

Merchandise Category	Total Value	Imports*	P.N.G. Purchases of Locally Produced and Manufactured Goods	
	\$	\$	Value	%
Meat/Poultry	860,000	860,000	Nil	-
Smallgoods	500,000	500,000	Nil	-
Dairy Products	240,000	238,000	2,000	1
Fruit & Vegetables	710,000	360,000	350,000	49
Fish (fresh & frozen)	137,000	125,000	12,000	9
Groceries	2,055,000	2,050,000	5,000	-
Bread	304,000	Nil	304,000	100
Beer	950,000	360,000	590,000	62
Soft Drinks	260,000	260,000	Nil	-
Cigarettes	400,000	275,000	125,000	31
Clothing	160,000	150,000	10,000	6
Homewares & Electrical	375,000	370,000	5,000	1
General	350,000	330,000	20,000	6
TOTAL	7,301,000	5,878,000	1,423,000	20

* Including purchases of imported merchandise through other PNG based importers.

JUNE RAINFALL

After a dry May the rain came back with a vengeance in June. Arawa, Panguna and Loloho rainfall was all above average. Arawa had 9.60 inches (average 6.67 inches); Panguna had 11.87 inches (8.66) and Loloho had 10.84 inches (6.36). Arawa had 10 days without rain, Panguna four and Loloho 11.

So far this year to June 30 (after six months) Panguna has received 100.96 inches of rain, Arawa 79.78 and Loloho 65.25 inches.

VOCATIONAL GUIDANCE

Employees who have children at high school in Australia or elsewhere are advised that vocational guidance is available for those children over 13 years of age.

Place:- B43, Pink Palace
Time:- 8.00 a.m.
Dates:- August 6, 8, 13 and 15.

As only a maximum of four can be tested on each day parents are requested to phone P. Fox on 5-252 during working hours for appointments.

FOR SALE

Honda 350 c.c. road bike, \$400. Wrecked 1300 V.W. \$50. Anthony Adelerhof, Loloho 239.

Fiat 128 stationwagon, \$900. Ron Donaldson, 5-189.

WANTED

Puppy, male or female, Paul Ipai, 5-121.



Above, the Arawa Supermarket nearing completion. To its right, workmen on the site of the Arawa Municipal Commission building.

CONCENTRATES IS EDITED BY JOHN ECCLES,
JOHN WAKARIA AND JOHN PIPPIN. TEL. 5-255
PHOTOGRAPHERS ARE BRIAN WENDT AND GENA
ILAI. TEL. 5-127

toktok

HOW THE VINE GOT TO THE EARTH

Long ago there lived a man called Kopere. He lived in a hut by himself because he had no family.

Early one morning Kopere went down to the beach and sat on a rock making his bow and arrows. At about twelve o'clock he was hungry. He saw a coconut floating on the sea. He wanted it so he swam to get it. As soon as he grabbed the coconut a strange thing happened. A whale swallowed him. Kopere couldn't see anything inside the whale's stomach. He searched for a stick to husk the coconut. At last he found one, husked the coconut and ate it.

Next morning he saw a light coming through the whale's mouth. The glittering light showed him where the whale's heart was. He got a shell and cut the heart. The whale died and the waves carried it down to the shore.

On reaching the shore Kopere came out of the whale and gazed in every direction. He saw a man looking at him. Kopere was so frightened he wanted to go back to the sea again. However the man called out to him and Kopere went to him. The man told Kopere he was Lowakant and he took Kopere home. He gave Kopere food and treated him as a friend.

After a few weeks Kopere decided to find a way back to his village. Lowakant knew where Kopere's home was so he cut strong vines and made a stretcher out of sugar cane. He also cooked some food for Kopere.

When the stretcher was finished Lowakant took Kopere to it. He called the village people to come and help him lower Kopere down to the earth. Lowakant gave instructions to Kopere not to stay on the stretcher when it touched the ground because he would let the ropes down.

When Kopere reached the ground he pulled the ropes and ran away. Lowakant and his people let the ropes down and from the ropes grew a strange vine. Nowadays the people of Nissan Island believe that this vine really came from the sky because when it grows from tall trees it reaches the ground easily and crawls along the ground till it reaches another tree to twine itself around.

- by KAREN TINAIU
a Form 2 student at
St. Mary's High School
Asitavi.

GOURMETS CORNER

Noticed an increased demand from housewives for fresh vegetables. Here are some salad ideas for your Sunday afternoon barbecues:

Potato Salad: Select large firm potatoes; wash with brush, place in a pot with water, two spoonfuls of salt and boil till tender. Take out and leave overnight. Next day remove skin and dice. Chop finely two onions, two dilled cucumbers, and add to potatoes. Season and mix with two spoons of mayonnaise. Decorate with hard boiled eggs.

Cole-slaw: The secret with this salad is to slice the cabbage the night before. Slice the cabbage finely. Lightly salt, then rub the salt into the cabbage with your hands. Cover with a wet cloth and leave overnight in the frig. Next day, drain the cabbage of water, add fine strips of carrot, green and red capsicums. If desired add small pieces of pineapple. Mix with mayonnaise, correct seasoning and serve.

ARAWA RIDING SCHOOL

Mrs. Betty Roach, wife of the Arawa town clerk, has started a riding school. At the moment she has a foal and a galaway (pictured below) but soon she is picking up two ponies and a large horse from Inus Plantation on the east coast.

Mrs. Roach will initially be teaching grooming and handling on one of the sports ovals or possibly the golf course. Later when enough pupils become proficient in riding, trips will be made along the beach and towards the mountains.



ARAWA WEDDING

Married at Tunuru Mission recently were Raye Lythgow, senior draughtsman, mining, and Miss Susana Dador from Manila. Best man was "Chips" Petraitis, ass. blasting foreman, pit. Bridesmaid was Miss Rebecca Henson and flower girl was Miss Leisa Obst.

SPORTS NEWS

The following is a report on the recent national SOCCER championships in Lae.

Taking into consideration the short time in which our team had to be selected, formed and trained, our small successes were quite good. A lot of people in Lae were made aware of the existence of soccer in Bougainville, and the team attracted a lot of good comments.

Almost every player tried his hardest on the field. But a few players were a bit unsure of themselves and did not settle down until too late in the game.

Future players will have to realise that they are going on the field to play against the best players in Papua New Guinea. The people may be the best, but they are not unbeatable. If every player tries his hardest and follows the rules the lowest team in the championships can hold and beat the top teams.

In our game against Lae we were beaten in the second half by fitness and common sense. The Lae team took control of the ball and passed it all over the field while we tried chasing it, instead of staying in position and marking the man the ball was being passed to.

In future selection trials will have to be held early in the season to allow the coaches to have players in training over a longer period. In this way, the top players will be able to play as a team more often.

Next year we will have more and better fields. One of these good fields should be put aside for the Bougainville team only to train on. The field can be used for normal Sunday games, but no other team is to use it for training. In this way, the field will remain in top condition and should match fields used in other centres for representative games.

Our team should travel to other centres, Buin, Buka, Wakunai at least once before the regional championships are held. This will allow the team to play together as a team and will also allow selectors to pick additional players from these other centres.

We have problems in Bougainville that no other centres have. Mainly, distance to travel for training, no good training grounds and no grounds that we can charge a spectator fee. But if every team in the association gives its support now, next year the Bougainville soccer team will be a much stronger force.

BOXING still must be one of the most popular sports on site. Last fight night was another packed house at Loloho and a really good night of boxing was witnessed.

Our fight night at the RSL is set down for August 4 and the trip to Rabaul is tentatively set down for August 25. Fighters from here, Rabaul and New Ireland will be participating so this should be a great night. Lets hope we can bring some titles back and I am quite confident we can.

A team of five or so will be going so keep the training up. I notice Jackie Luff is in real hard training. This is great as he is one of our best. Paul Gallo is doing a great job with the team training, ably helped by Jack; the boys at Camp 6 are being put through their training by our referee and trainer Ron Lane.

It is intended to form a DARTS, SNOOKER and TABLE TENNIS competition between teams from Panguna. If interested, form a team in any of the games mentioned and let me or Ken Rabura know, phone 272.

There is a move afoot to start up a ladies VOLLEYBALL comp. Anyone interested is asked to contact myself or Mrs. Mucha on phone 119.

The latest dates for completion of our NEW FACILITIES given by the engineering department (with tongues in cheek) are Pool - July 31, Gym - July 31, Squash Centre - August 15.

And of course, the oval when the grass grows!!! FOOTBALL and football training will not be permitted on the oval until the grass has taken properly and this will be some time yet but it should be a magnificent surface for play when opened.

RUGBY results to July 8: The big battle of the top teams Kumul and Tura took place but unfortunately Tura were forced, by injuries etc., to field a weakened team than normal. Kumul were far too good.

After the game I could see Simon Bonga's big smile 100 metres away. Every time Tura made a mistake the whole team seemed to stop dead and not worry about the ball. This allowed Kumul to regain possession time and time again. Kumul were also far too strong in the scrums. Kumul are the side to beat this season.

Results: Kumul 22 to Tura 7; Hiri/PDF 18 to Barbarians 17; Brothers 15 to Moruk 5; United 16 to Police 16.

After round 1 the ladders are as follows:

A Grade: Kumul 14; Tura 12; Hiri/PDF 11; Brothers 10; Marshall Lagoon 10; Moruk 6; Barbarians 4; Police 4; United 1.

B Grade: Kumul 10; Brothers 10; Marshall Lagoon 9; Barbarians 5; Hiri/PDF 4; Tura 2; United 2.

- RON HERRICK

The three town TENNIS tournament came to an exciting finish on July 8 when Panguna Green defeated Panguna Blue 40 games to 39. The result of the tournament was in doubt right until the last game.

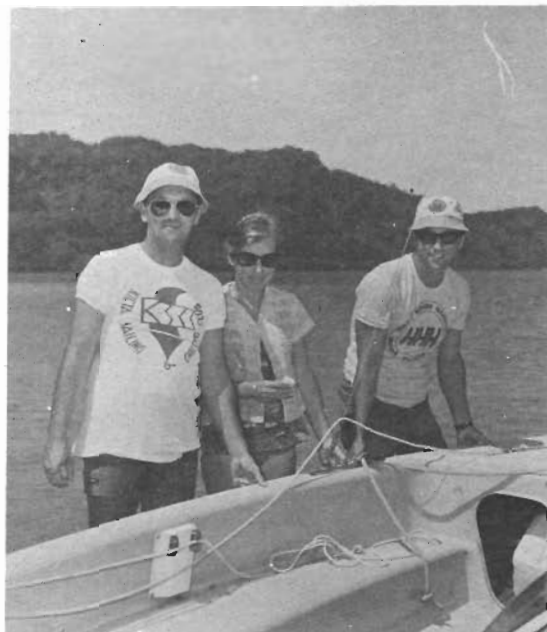
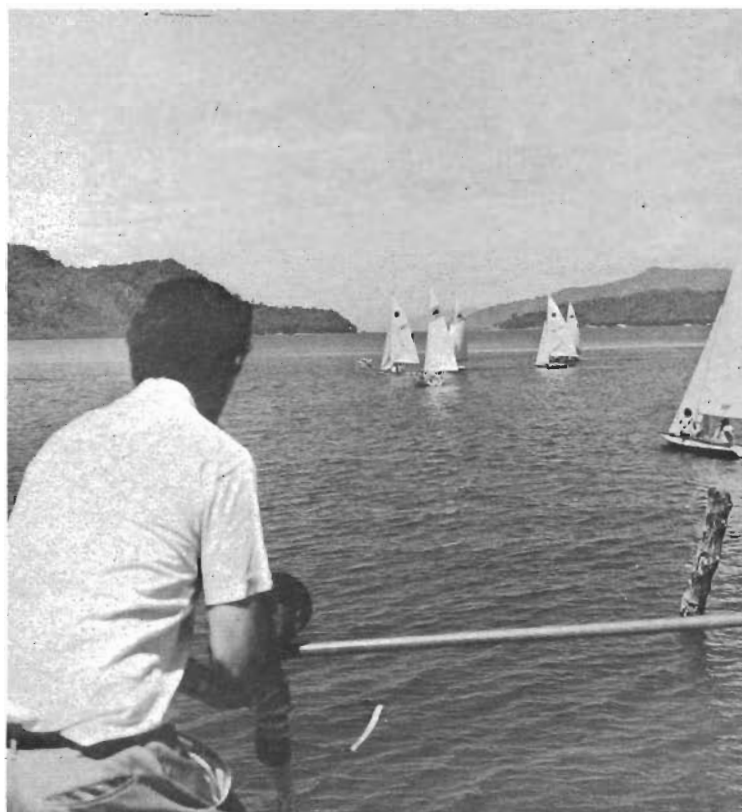
Most improved player for Blue was young Kakau Maiko who played enthusiastically right through the season and changed from a comparatively inexperienced player to a formidable opponent. For Greens Russ Cary was the star of the day. In the vital first mixed doubles he was unbeatable. The two teams were: Green - Russ and Wendy Cary, Don and Vivien Mitchell, the Rev. Norman Battersby and Sally Branson. Blue - John Gotsalks, Joan Martain, John Eccles, Liz Bassaker, Kakau Maiko and Jenny Collins.

Special thanks to Arawa and Kieta tennis players Des Hudson, Peter Hall and Rod Bowden who took the trouble to come up and umpire the games. - JSE

KIETA YACHT CLUB

Kieta Yacht Club, just over a year old, has some 22 craft including four Fireballs, five Corsairs and two Quickcats, and over 136 members. Situated at the old Kieta Hospital site, the club welcomes anyone to come down and have a sail. Local people are welcome. The old malaria office has been renovated into a club house and the old T.B. ward is the boat shed. During the four seasons each year a total of four trophies are being competed for.

Pictures show (bottom from left) Denise Noack (research assistant, public affairs), Stewart Harris (bank officer) and Phil Noack (electrical technician); Richard Clark (field research engineer); and Mr. and Mrs. Geoff Bolger (central maint. services super.) and Vince Gonzalbez (training maint. supervisor). Below, start of a race.



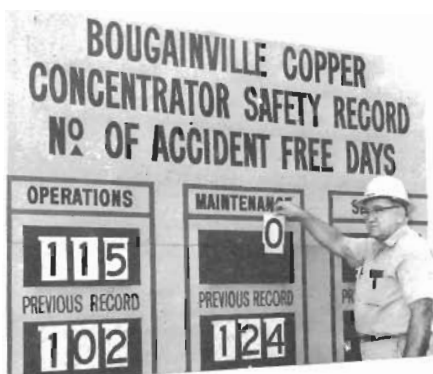


A LION OF A NIGHT

Looks like the recent Panguna Lions Club annual installation and changeover dinner turned into quite a ding! Held at Kawerong Haus, the affair marked the choosing of new officials for their club which does excellent work raising money for village and youth organisation projects on Bougainville. Top left, chairman and 1st vice-president Noel McDuffie (operator training officer) presents Duff Erickson (AGM, production and community relations) with a souvenir bannerette. Looking on is Don Vernon (general manager). Both were among the official guests. Below, Ziggy Bewang (travel officer) with Miss A. Bazoka (sec.). Bottom, Jack Sutherland (elect.supt. milling), Bill Brittain (security officer) and Henry Moses (industrial relations officer). Top, Liz Bissaker (secretary), Jim Bissaker (draughtsman), Mr. and Mrs. James Lemandi, (psychology clerk). Centre, Diane Weldon (computer operator), John Meyer (educ. training instructor) and Taryo Kendari (security officer). Above, John Dunkley (first aid officer) dances with Mrs. Jackie Shaw.

IN THE CLOUDS

by mauswara



Hard luck Concentrator. Up to July 3 (when an injury occurred) the department had gone 370,000 man hours without disabling injury to personnel. Another week and they would have qualified for an award from the National Safety Council of Australia. As it was, the 370,000 hours were a record for that department. Picture above shows "Sandy" Brown, Concentrator services foreman, changing the safety record board back to "0". In fact, however, the services section of the Concentrator was, on July 3, 524 manhours without disabling injury and still going strong....

Something of a big weekend for the Woodfords. Claire (wife of Don, manpower control officer) went out fishing on July 7 and caught a couple of eight pounders. The next day she was in Arawa Hospital giving birth to a healthy 5lb 15oz daughter. Their first born's called Cheree Arlette and "quite a catch".....

Continuing the supermarket prices controversy.... Robby Roberts (public affairs adviser) has just returned from Honiara where, he says, prices are far higher than here. All imported food items make Panguna and Arawa supermarkets look cheap. But local food prices are cheaper.....



The Panguna Hash House Harriers farewelled six stalwart members recently. Above, from left, are Dave Mallin, senior technical assistant; Ray Cantrell, planning metallurgist; Peter Hawkes, mechanic, heavy equipment workshop; Brian Rear, milling supervisor; Theo Macrides, training chemist; and "Blue" Wood, lab. metallurgist. The Panguna HHH are after new members so if you like a Friday evening run through the bush and a few ales after it, give Bob Duffy a ring on 5-121.

PANGUNA

Thurs. & Fri. July 26 & 27	The Apartment	Jack Lemmon Fred McMurray Shirley McLaine
Sat. & Mon. July 28 & 30	Star	Julie Andrews
Sun. & Tues. July 29 & 31	Banquero	Lee Van Cleef Warren Oates
Thurs. & Fri. Aug. 2 & 3	Hell Boats	James Franciscus Elizabeth Shepherd
Sat. & Mon. Aug. 4 & 6	Downhill Racer	Robert Redford
Sun. & Tues. Aug. 5 & 7	Heroes of Telemark	Kirk Douglas Michael Redgrave

ARAWA

Sunday July 29	Witness for the Prosecution	Marlene Dietrich Tyrone Power
Wednesday August 1	The Apartment	Jack Lemmon Fred McMurray Shirley McLaine
Friday August 3	Rio Conchos	Stuart Whitman Richard Boone
Sunday August 5	Star	Julie Andrews
Wednesday August 8	Hell Boats	James Franciscus Elizabeth Shepherd
Friday August 10	Banquero	Lee Van Cleef Warren Oates

TUG ANSWERS DISTRESS CALL

Bougainville Copper's tug "Loloho" answered a distress call from Peter Hunter's "Kairuku" which struck Bume reefs off Tarara village near Mabiri point on July 5. But the tug could do little as "Kairuku" was declared completely lost by the Kieta Harbourmaster. Crew were picked up by a government rescue team.

EMPLOYMENT VACANCIES

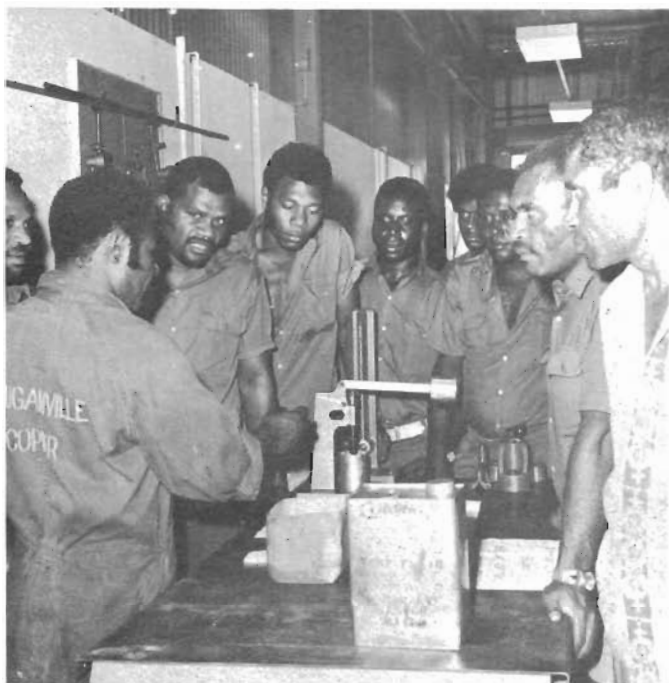
At Panguna the following positions are currently vacant. These are senior positions requiring a high standard of education and considerable job experience:

Supply officer - administration department
Industrial relations officer - employee relations department
Camps inspector - employee relations department
Welfare officer - employee relations department
Hygiene inspector - employee relations department
Pit training officer - mining department
Surveyor - mining department

As well as the above staff positions, we have vacancies for:

Trainee dump truck operators and trainee semi-trailer drivers.

Personnel interested in any of the above positions are requested to phone the employment office for further information. (Ext. 324).



"Open Day" at the technical training centre in late June was a great success. Above, general manager Mr. D. C. Vernon, inspects machining work being carried out by fitting machining apprentice Maikao Jazape. Top, a group of company visitors listen to diesel apprentice Robert Sindo explaining the servicing and testing of hydraulic valve lifters.

OPTICAL SERVICE

The New Guinea Optical Service will be visiting Panguna on a weekly or fortnightly basis, depending on demand. The company carries out sight testing and the issuing of safety glasses, spectacles and sunglasses. Repairs are also carried out. Contact BCP medical centre or write to P.O. Box 394, Arawa or call if you wish at Flat 3, Jepperson Court, Toniva.



Of the 98 BCP former apprentices that received certificates at a special apprenticeship function held at the Arawa Fermentary recently, eleven received prizes awarded to them by the Papua New Guinea Apprenticeship Board. Top, some of the graduated apprentices. Middle, a happy group of five from Manus. From the left they are, Lombat Singel, electrical linesman; James Beno, electrical linesman; Paura Mah, plumber/drainier; Jete Chiwa, electrical linesman and Pocholau Kilapek, auto diesel mechanic. Above, Michael Tane, auto diesel mechanic; Joe Kalama, apprentice controller and Camillus Tetana, BCP Apprentice of the Year.

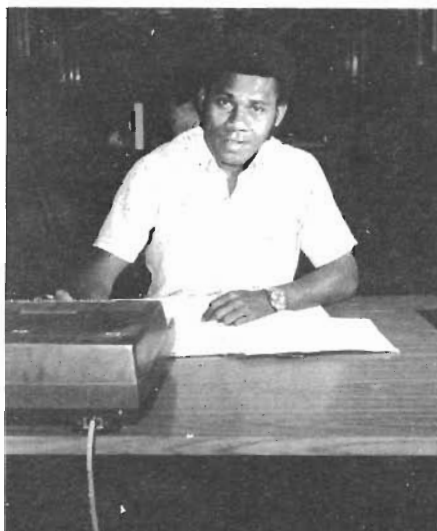
COMINGS AND GOINGS

Coming: M. Brandt, senior analyst; C. G. Patterson, senior surveyor, mining; W. D. Skinner, technical education teacher; G. J. Pascoe, mechanical crushing supervisor; F. Binawata, truck driver; J. Ling, semi trailer driver; B. Muruno, electrical trade assistant; A. Pamonu, bus driver; G. Galiman, electrical repairman.

Going or gone are: S. Warbrick, construction foreman, milling; D. Cowan, despatch operator; W. J. McFadzen, electrical foreman; Mike McShane, safety officer; Fred Brost, mine industrial engineer; M. A. Low, storeman; I. F. Thomas, maint. foreman, shovels and drills, Mrs. R. Mirinu, typist; J. Berenke, senior clerk, village relations; F. Vovore, security guard.

people

Below, left to right, Rommy Penniel, maintenance clerk, pit workshop; Simon Taniung, accounts reconciliation clerk and Peter Lihai, cost officer, both from pay office. Middle, John Poliki, maintenance planning clerk, pit workshop; Barnabas Manuai, reconciliation supervisor and Moare Anteyam, reconciliation clerk; Michael Dewe, general ledger officer and Matthias Ross, asset clerk, all from pay office. Bottom, Sirius Gomaniei, visitors' liaison officer, public relations; Darius Waula, product sales officer, pay office; Louis Tatou and Thomas Lena, both working on a swing gearbox from one of the 2100B P&H shovels.



panguna

ORGANISATIONS:

Panguna Arts Society	Mr. M. Duthie	5-176
Lions Club President	Mr. W. Brittain	5-132
Parents & Citizens Assoc.	Mr. R. Hope	5-314
Primary School Mothers Club	Mrs. M. Blackwell	958187
Squash Club Secretary	Mr. M. Sullivan	5-139
Cricket Club President	Mr. J. Trezise	5-317
Panguna Pre-School Committ.	Mr. M. Crow	5-310
Scouts & Guides Chairman	Mr. W. Smith	5-238
Panguna Hash House Harriers	Mr. B. Duffy	5-121
Panguna Munkas Ass.	Mr. J. Dumit	5-272
BCP Womens Club	Mrs. Voi Voi	18 Karoona Rd.
Photo. Club President	Mr. N. A. Nour	5-275

EMERGENCY DIRECTORY:

Security Emergency Control 958333.....123
(For all emergencies)

Medical BCP Medical Centre 958304.....254
Panguna Hospital 958089

Police Police Station 958222
958263

BANK:

A branch of the Commonwealth Bank is situated approx. 150 yards west of the Trade Store and is open:

Monday to Friday 9.00 a.m. - 2.00 p.m.
Friday Only 4.30 p.m. - 6.00 p.m.
Saturday 8.30 a.m. - 10.00 a.m.

POST OFFICE is open:

Monday to Friday 8.30 a.m. - 12.00 p.m.
1.00 p.m. - 4.00 p.m.
Saturday 8.30 a.m. - 12.00 p.m.

LIBRARY is open:

Sunday to Saturday 10.00 a.m. - 10.00 p.m.

TRADE STORE is open:

Monday to Friday 9.00 a.m. - 5.30 p.m.
Friday evening 6.30 p.m. - 8.30 p.m.
Saturday 9.00 a.m. - 12.00 p.m.

HOSPITAL:

Out-Patients:

Monday to Friday 8.00 a.m. - 12.00 p.m.
1.00 p.m. - 4.00 p.m.
Saturday 8.00 a.m. - 11.30 a.m.
Tuesday Ante-natal 8.30 a.m. - 11.30 a.m.
Wednesday Baby Clinic 8.30 a.m. - 11.30 a.m.

The BCP Medical Centre is open for treatments from:

Monday to Friday 8.00 a.m. - 4.00 p.m.
Saturday 8.00 a.m. - 10.30 a.m.

CHURCH SERVICES:

Catholic Sunday 8.00 a.m. and 7.00 p.m.
Every evening 7.00 p.m.
Priest in charge - Father G. Fahey,
P.O. Box 48,
Panguna.
United Church Sunday at 9.00 a.m. and 8.00 p.m.
Sunday 6.45 p.m. at Camp 10
Every Wednesday at 7.30 p.m.
Minister in charge - Rev. Battersby,
P.O. Box 9,
Panguna.
Lutheran Sunday at 10.00 a.m.
Sunday at 8.00 a.m. at Camp 10
Pastor in charge - Rev. D. Zweck
P.O. Box 497,
Arawa

arawa

Country Womens Association	Mrs. M. Bowden	951808
Lions Club President	Mr. W. Weir	951222
Country Club	Mr. I. Baird	4-120
Arawa Civic Association	Mr. R. Jeffery	5-287
Tennis Club President	Mr. R. Bowden	5-374
Girl Guides President	Mrs. C. Newman	951594

POLICE STATION: 951222

TRADE STORE is open:

Monday to Thursday 8.30 a.m. - 5.30 p.m.
Friday 8.30 a.m. - 8.30 p.m.
Saturday 8.00 a.m. - 12.00 p.m.

BANK is open:

Monday to Friday 9.00 a.m. - 2.00 p.m.
Saturday 8.30 a.m. - 10.00 a.m.

POST OFFICE is open:

Monday to Friday 8.00 a.m. - 12.00 p.m.
1.30 p.m. - 4.00 p.m.
Saturday 8.00 a.m. - 12.00 p.m.

LIBRARY at the old Fermentary Homestead is open:

Monday to Friday 10.00 a.m. - 12.00 p.m.
1.00 p.m. - 4.00 p.m.
Saturday 9.00 a.m. - 12.00 p.m.

HOSPITAL:

Intermediate Out-Patients

Monday - Friday 10.00 a.m. - 11.30 a.m.

Ante-Natal Clinic

Monday (Doctor in attendance) 1.30 p.m. - 3.00 p.m.
Wednesdays 8.00 a.m. - 11.30 a.m.
1.00 p.m. - 3.30 p.m.

Maternal & Child Health Clinic

Monday and Friday 8.00 a.m. - 11.30 a.m.
1.00 p.m. - 3.30 p.m.

Vaccinations

Tuesday & Thursday 1.30 p.m. - 3.00 p.m.

General Out-Patients

Monday to Friday 8.00 a.m. - 12.00 p.m.
1.00 p.m. - 4.00 p.m.
Emergencies 7 days a week, 24 hours.

No visiting the hospital is allowed outside regular visiting hours, unless special arrangements have been made. Visiting hours are:

3.00 p.m. - 4.00 p.m.
7.00 p.m. - 8.00 p.m.

CHEMIST: 951304

Monday to Friday 8.30 a.m. - 12.30 p.m.
1.30 p.m. - 5.00 p.m.
Saturday 8.00 a.m. - 12.00 p.m.

DENTIST: Arawa 951424

Monday to Friday 8.00 a.m. - 12.00 p.m.
2.00 p.m. - 6.00 p.m.
Saturday 8.00 a.m. - 9.30 a.m.

CHURCH SERVICES:

Catholic Sundays 8.00 a.m. and 5.00 p.m.
United Church Sunday 9.00 a.m.
Lutheran Sunday 10.00 a.m.
Sunday 7.00 p.m. every second week, in English, at house 15/112

All services are held at the Arawa Fermentary.